

**HAWAIIAN PLANT MATERIAL
(excluding fruits, vegetables and herbs)**

A. Cut Flowers

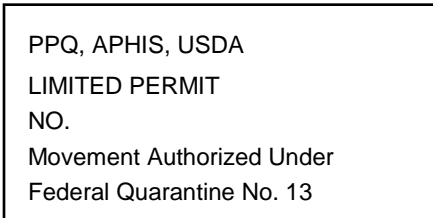
Responsibility of certification is with the United States Department of Agriculture (USDA).

Shipments of cut flowers and dry decorative material by mail, express and air cargo. Firms regularly shipping these commodities have been placed under compliance agreements by the USDA. The terms of these agreements provide that only specific, approved materials, free from pests, may be shipped. All shipping firms operating under compliance agreement are inspected approximately every six months to determine that the terms of the agreement are being met. The USDA requires that certain plant material be dipped as a precautionary treatment; however, they do not use a treatment stamp indicating any treatments have been performed.

Accompanying Hawaiian Stamps and Certificates:

Cut flowers and dry decorative material: The compliance agreement also requires each shipment of cut flowers be stamped "*May be opened for postal inspection.*" This allows the USDA to spot check packages at the post office prior to shipment and also facilitates destination inspections.

USDA Limited Permit Stamp: Cut flowers and dry decorative material shipped by firms under compliance agreement bear a limited permit stamp (example below), which will also include the island of origin:



USDA "RELEASED" Stamp: Shipments of cut flowers and dry decorative material from firms and individuals not under a compliance agreement are inspected prior to shipment by federal inspectors to determine compliance with federal quarantines. Those meeting the requirements are stamped with a USDA "RELEASED" stamp. Those not meeting the requirements are returned to shipper.

Burrowing and Reniform Nematode Certificate: Cut flowers of prime hosts when free from soil and not capable of propagation are exempt from burrowing and reniform nematode quarantine requirements.

If your inspection of any shipments of cut flowers, foliage or dry decorative material reveals the presence of pests or plant material in violation of federal or state quarantines, please advise Pest Exclusion of your findings. Compliance agreements may be revoked and corrective action will be taken by the USDA in Hawaii if other than approved, clean material is being shipped.

Plant Material in Ship Cargo and Baggage

Plant material carried in vessel's cargo or passenger's baggage is inspected for pests, and treated when necessary under USDA supervision. Also, this material is subject to inspection by the County Agricultural Commissioner upon arrival at destination.

B. Propagative Material and Nursery Stock

Responsibility of certification is with the State of Hawaii Department of Agriculture (HDA).

Shipments of propagative plant material and nursery stock by mail, express and air cargo should be held for destination inspection by the common carrier or post office. Propagative plant material shipped to California by mail, express and air cargo is inspected in Hawaii prior to departure by inspectors of the Plant Quarantine Branch, HDA. Inspectors of the USDA, also participate in the inspection. Inspections determine compliance with California exterior quarantines and Federal plant quarantine requirements.

Accompanying Hawaiian Stamps, Certificates, and Marking Requirements:

Plants: For all islands, all packages containing propagative material must be **marked with the name and address of the shipper and receiver, a statement of contents and the name of the county, state or territory where contents were grown, as per California Food and Agriculture code: 6421**

Burrowing and Reniform Nematode Certificate: Shipments of nursery stock and **orchid plants** from Hawaii must be accompanied by a burrowing and reniform nematode certificate issued by the HDA.

TERMINAL INSPECTION

HDA issues nematode certificates to nurseries participating in Master Permit No. QC 650. Participating nurseries will be authorized to ship nursery stock to California destinations under the terms of California's Master Permit No. QC 650. This permit is equivalent to that which was issued to the Florida Department of Agriculture and Consumer Services QC 390. The wording of HDA's burrowing and reniform nematode certificate is as follows:



* See page 105.2 for a list of invalid QC 650 numbers.

These certificates are used for both nursery stock and **orchid plants**. The certificates have 4 digit numbers (the old certificates had 3 digit numbers). Additionally, HDA maintains their own nematode certificate for distribution to qualifying shippers. This certificate is identical to the one above, but does not have a number associated with it.

**THE FOLLOWING NUMBERS ARE NO LONGER VALID
CALIFORNIA/HDA MASTER PERMIT QC 650 NUMBERS**

0003	0101	0171	0259	0320	0385	0473
0014	0104	0176	0260	0321	0386	159
0019	0105	0185	0261	0322	0389	312
0020	0111	0186	0262	0323	0394	330
0023	0114	0188	0266	0325	0395	447
0029	0115	0190	0268	0327	0399	464
0030	0116	0193	0270	0328	0402	477
0031	0117	0194	0274	0329	0403	482
0034	0118	0202	0275	0330	0405	501
0038	0119	0210	0277	0332	0406	512
0039	0122	0214	0280	0334	0407	542
0043	0123	0215	0281	0338	0410	543
0045	0125	0226	0282	0339	0413	545
0049	0127	0227	0283	0341	0414	561
0050	0128	0228	0284	0342	0415	569
0052	0131	0229	0285	0345	0419	587
0053	0132	0230	0289	0347	0420	622
0054	0134	0231	0290	0348	0426	632
0056	0136	0234	0291	0349	0427	645
0060	0139	0235	0294	0350	0429	649
0061	0140	0237	0295	0351	0433	654
0064	0141	0239	0296	0354	0435	688
0065	0144	0240	0298	0361	0436	699
0066	0145	0245	0300	0362	0443	722
0069	0146	0248	0304	0367	0447	726
0070	0148	0249	0305	0372	0448	756
0071	0149	0250	0309	0373	0449	
0077	0155	0251	0312	0376	0451	
0078	0158	0252	0313	0377	0452	
0091	0163	0253	0316	0378	0455	
0096	0169	0256	0317	0382	0456	